

Hawthorn[®]

SUITES BY WYNDHAM



A PROJECT BY
SHERANWALA
DEVELOPERS

A woman with long dark hair, wearing a light-colored sweater, is smiling and holding a light green ceramic mug with both hands. She is looking down at the mug. The background is a bright, out-of-focus living room with a beige sofa, a potted plant, and a framed picture on the wall. The image has a warm, inviting feel. A red and orange horizontal bar is at the bottom. A red box with a yellow border is on the right side, containing the brand name.

Hawthorn[®]
SUITES BY WYNDHAM



STAY
LONGER
STAY
BETTER

WELCOMING

FAMILIAR

HOME

WYNDHAM

HOTELS & RESORTS



855,000

HOTEL ROOMS

North America, USA, Europe,
Africa, Middle East, Australia & Pacific,
Asia



APPROX

9300

HOTELS

With approx. 9,300 hotels and
over 903,000 rooms, we have
a variety of options for every
guest and owner.



OVER

114M

MEMBERS

hotel loyalty program with 108+
million enrolled members



OVER

95

COUNTRIES

We have hotels in over 95 countries
around the world, providing an expansive
global presence for owners.

Hawthorn[®]

SUITES BY WYNDHAM

WYNDHAM
HOTELS & RESORTS

110+

EXTENDED STAYS AROUND THE WORLD

WYNDHAM
REWARDS[®]

HOW WE THINK
Welcoming

HOW WE FEEL
Familiar

WHAT WE DELIVER
Home

Hawthorn[®]

SUITES BY WYNDHAM

LAHORE CANAL ROAD

AT GLANCE

LOCATED
MAYFAIR RESIDENCIA
CANAL ROAD LAHORE



Stay Hawthorn. Stay as you are.

Hawthorn Suites by Wyndham is an international serviced-apartment hospitality brand designed for guests who want more than a typical hotel stay. It's built around the idea of a "home-away-from-home" where you can settle in, feel comfortable, and stay longer with ease.

Whether someone is relocating, visiting for work, staying near hospitals or universities, travelling with family, or visiting from abroad, Hawthorn Suites provides the space and privacy they need while still offering the reliability of a global hospitality brand. Guests can maintain their daily routine with comfortable living spaces, practical amenities, and a calm, residential feel; making it ideal for both short visits and extended stays.





Stay Longer, Stay Better.

Hawthorn Suites by Wyndham also offers lifestyle-focused facilities that make everyday living easy and comfortable—such as a swimming pool, fitness centre/gym, prayer area, kids' play area, and dedicated recreation spaces for families and residents. Guests can unwind in rooftop gardens and open-air, breathable outdoor environments designed for relaxation, fresh air, and a calmer stay experience creating a true “live, work, and recharge” setting rather than just a traditional hotel.

And because it's backed by Wyndham Hotels & Resorts, it's a brand you can trust with international standards and global hospitality experience. Wyndham is also known for its strong loyalty programme Wyndham Rewards and its global “champions” approach to guest satisfaction, offering members benefits, rewards, and recognition across thousands of hotels worldwide, making every stay more valuable and more reliable.







King 1 Bedroom Suite



Queen 2 Bedroom Suite



Presidential 3 Bedroom Suite



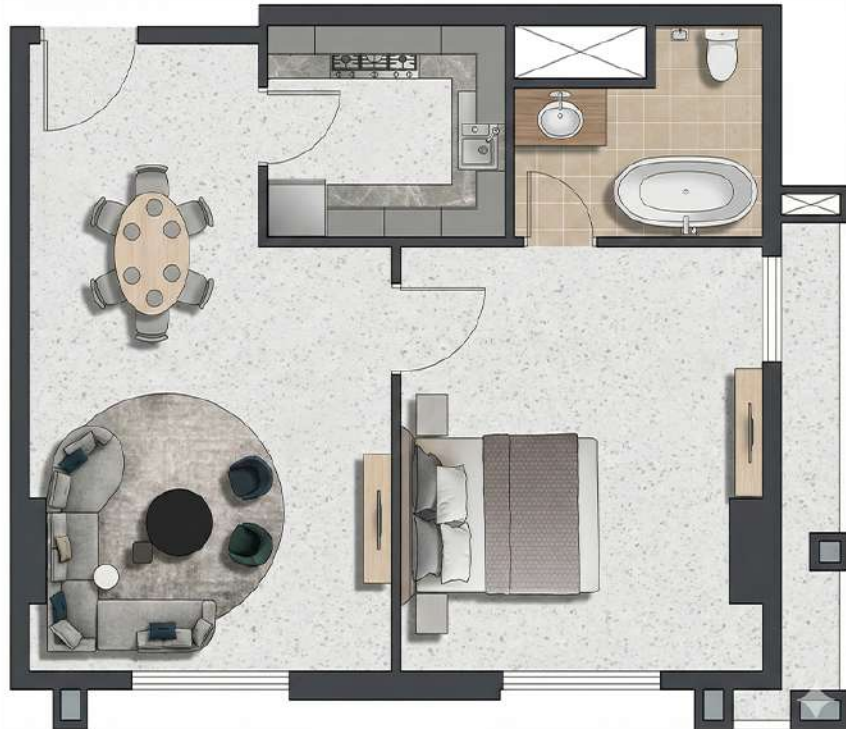
King 1 Bedroom Suite (Size: 1056)

Bedroom: 16'-1.5" x 13'-9"

Lounge: 16'-1.5" x 13'-9"

Kitchen: 8'-0" x 9'-0"

Bath: 8'-0" x 9'-5"



Studio Apartment Executive Studio Apartment (Size: 690)

Bedroom: 14'-0½" x 17'-7½"

Kitchen: 5'-0" x 7'-0"

Bath: 6'-11" x 9'-6"

CATEGORY	RANGE
STUDIO	492-744
ONE BEDROOM	981-1275

Presidential 3 Bedroom Apartment

(Size: 2070)

Bedroom: 14'-3" x 12'-0"

Bath: 9'-6" x 6'-1.5"

Bedroom: 11'-1.5" x 12'-10.5"

Bath: 7'-6" x 5'-6"

Bedroom: 14'-4.5" x 12'-11.5"

Bath: 9'-0" x 6'-0"

Lounge: 16'-9" x 12'-6.5"

Kitchen: 7'-0" x 14'-4"



Queen 2 Bedroom Apartment (Size: 1871)

Bedroom: 13'-10" x 16'-6.5"

Bath: 7'-0" x 10'-6.5"

Bedroom: 17'-4.5" x 11'-7.5"

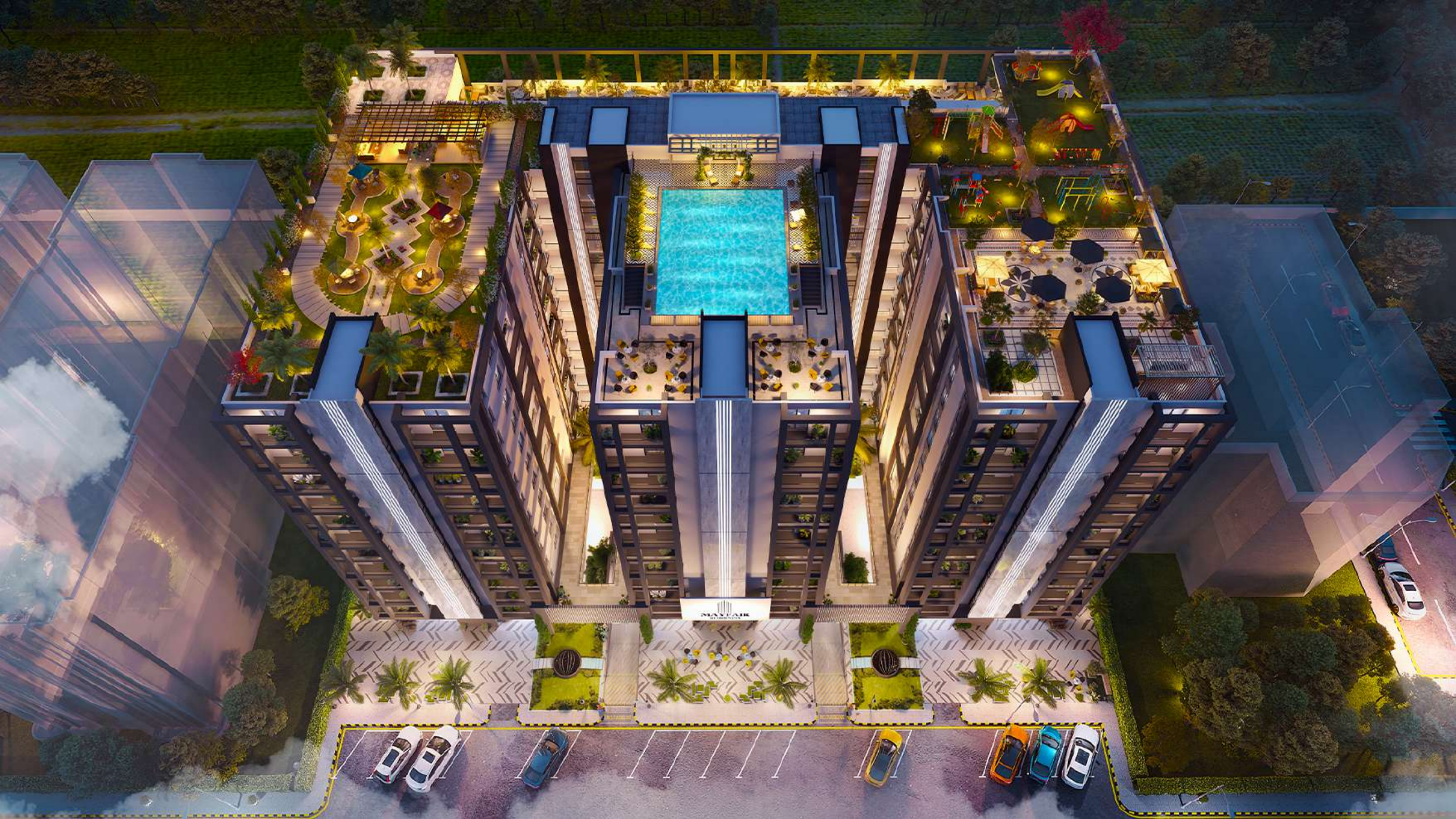
Dress/Bath: 6'-9" x 11'-4.5"

Lounge: 18'-1.5" x 13'-4"

Kitchen: 8'-0" x 7'-6"

CATEGORY	RANGE
TWO BEDROOM	1516-1900
THREE BEDROOM	1789-2284





Hawthorn
SUITES BY WYNDHAM
LAHORE CANAL ROAD

INVESTMENT OPPORTUNITY

STARTING FROM

10 LAC RUPEES
remaining in
48 MONTHLY
INSTALMENTS

03-111-228-228

